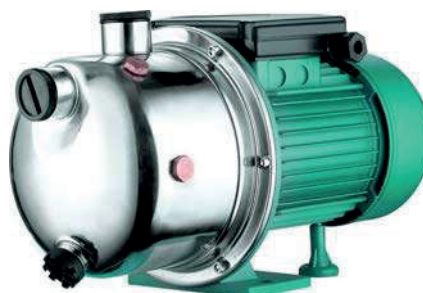




IMAS GROUP

REAL QUALITY MADE IN ITALY



INDEX

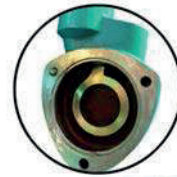
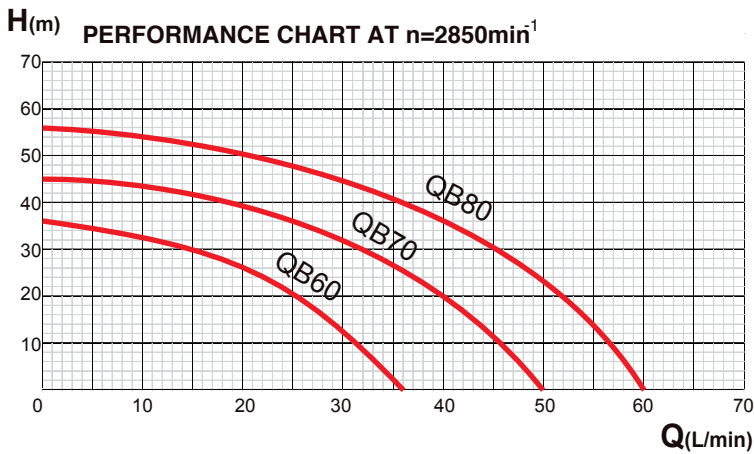
PERIPHERAL PUMP	01
CENTRIFUGAL PUMP	02
SELF-PRIMING PUMP	06
SUBMERSIBLE PUMP	08
SEWAGE PUMP	12
SUBMERSIBLE GRINDER PUMP	14
DEEP WELL PUMP	15
VERTICAL MULTISTAGE PUMP	16

PERIPHERAL PUMP - QB

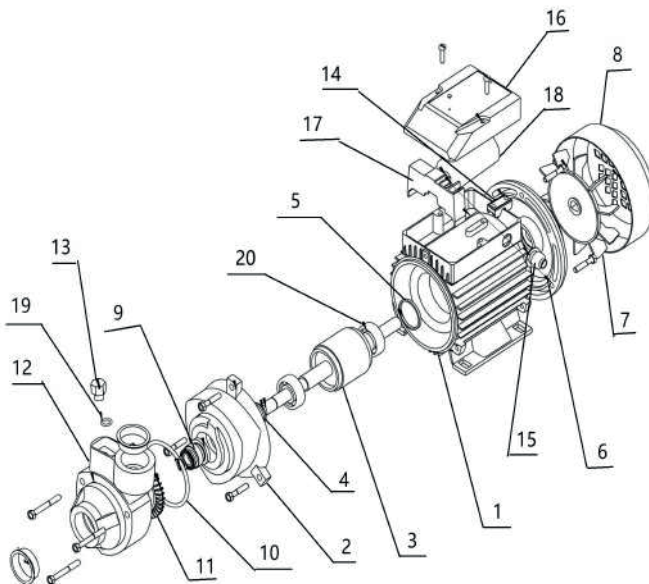
Peripheral Pumps are suitable for pumping clean water. They are particularly suitable for domestic applications such as supply water from well, pool well, pool etc. They are also suitable for water pressure boosting, gardening and automatic water supplying system if composed with other appliances.

Technical parameter

Model	Voltage	Frequency	Power		Current	H. Max	Q. Max	Size	S. Head	G.W
	V	Hz	kW	HP	amp	m	L/min	inch	m	kg
QB60	220	50	0.37	0.5	2.9	36	36	G1" × G1"	8	5
QB70	220	50	0.55	0.75	3.5	45	50	G1" × G1"	8	8
QB80	220	50	0.75	1	5.5	55	60	G1" × G1"	8	8.5



Brass antiblock system



EXPLODED VIEW DRAWING - SPARE PARTS

No.	Description.	No.	Description.
1	Motor body	14	Wire clip
2	Motor front cover	15	Fairlead
3	Rotor	16	Terminal cover
4	Washer	17	Terminal block
5	Spring washer	18	Capacitor
6	Motor end cover	19	Seal
7	Fan	20	Ball bearing
8	Fan cover		
9	Mechanical seal		
10	O ring		
11	Impeller		
12	Pump body		
13	Flit plug screw		

available also in 60HZ

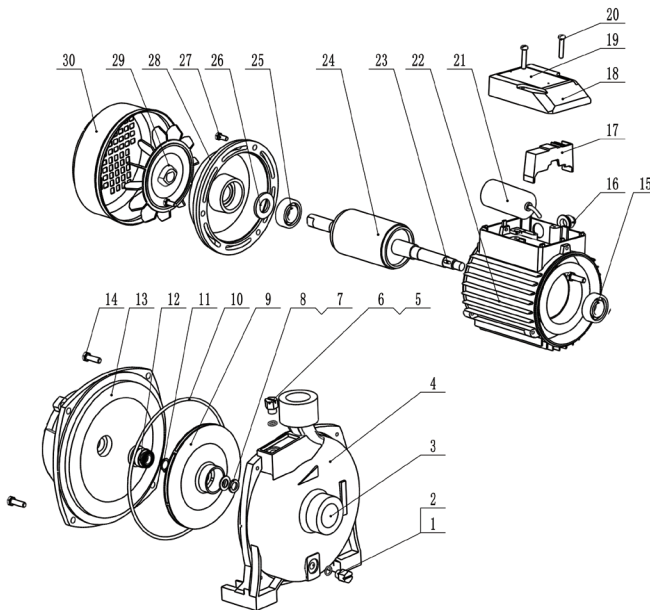
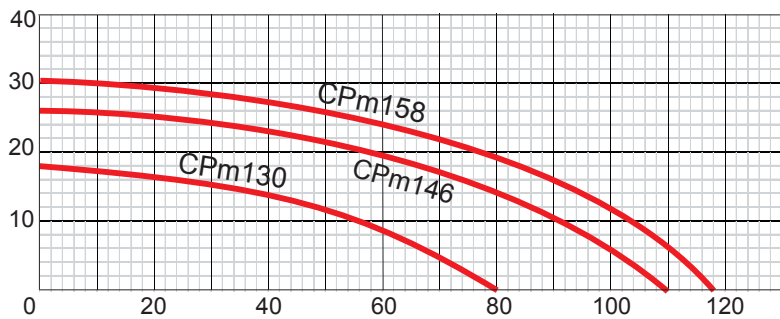
CENTRIFUGAL PUMP - CPm

Centrifugal Pumps are suitable for both domestic and industrial applications to convey clean liquids and non-aggressive chemical fluids. These pumps are characterized by low head and high capacity.

Technical parameter

Model	Voltage	Frequency	Power		Current	H.Max	Q.Max	Size	S.Head	G.W
	V	Hz	kW	HP	amp	m	L/min	inch	m	kg
CPm130	220	50	0.37	0.5	2.9	18	80	G1" × G1"	8	8.6
CPm146	220	50	0.55	0.75	3.5	26	110	G1" × G1"	8	12
CPm158	220	50	0.75	1	5.5	30	118	G1" × G1"	8	13

H(m) PERFORMANCE CHART AT n=2850min⁻¹



EXPLODED VIEW DRAWING - SPARE PARTS

No.	Description.	No.	Description
1	Flit plug screw	15	Ball bearing
2	O ring	16	Fairlead
3	Inlet	17	Terminal block
4	Pump body	18	Terminal cover
5	Flit plug screw	19	Name plate
6	O Ring	20	Screw
7	Nut	21	Capacitor
8	Washer	22	Motor body
9	Impeller	23	Flat key
10	O ring	24	Motor Rotor
11	Locicing ring	25	Ball bearing
12	Mechanical seal	26	Spring washer
13	Motor front cover	27	Screw
14	Screw	28	Motor end cover
		29	Fan
		30	Fan cover

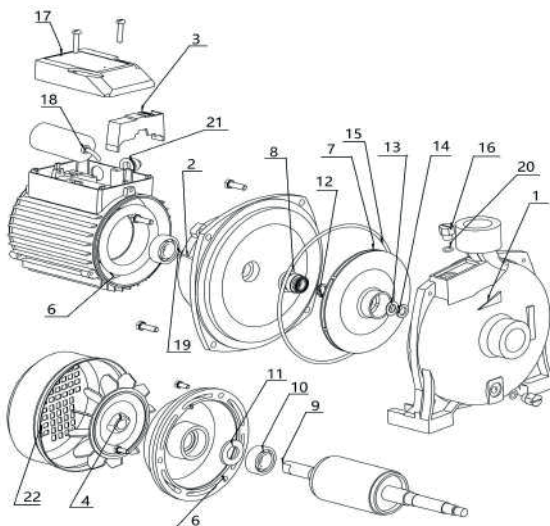
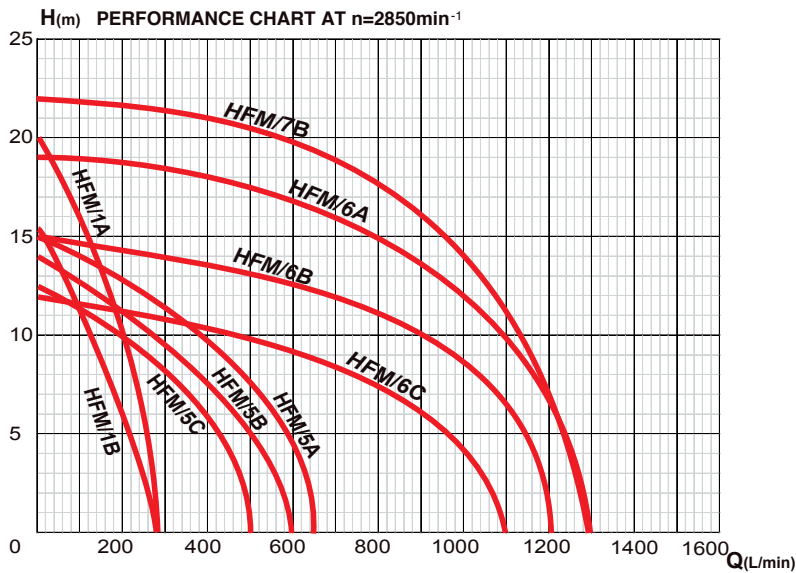
available also in 60HZ

CENTRIFUGAL PUMP - HFM

Centrifugal Pumps are suitable for both domestic and industrial applications to convey clean liquids and non-aggressive chemical fluids. These pumps are characterized by low head and high capacity.

Technical parameter

Model	Voltage	Frequency	Power		Current	H.Max	Q.Max	Size	S.Head	G.W
	V	Hz	kW	HP	amp	m	L/min	inch	m	kg
HFM/1B	220	50	0.6	0.8	3.5	16	275	G1.5" x G1.5"	8	12.5
HFM/1A	220	50	0.75	1	5.5	20	275	G1.5" x G1.5"	8	13.5
HFM/5C	220	50	0.6	0.8	3.5	12.5	500	G2" x G2"	8	14.8
HFM/5B	220	50	0.75	1	5.5	14	600	G2" x G2"	8	15.7
HFM/5A	220	50	1.1	1.5	7.5	15	650	G2" x G2"	8	16.3
HFM/6C	220	50	1.1	1.5	7.5	12	1100	G3" x G3"	8	28.6
HFM/6B	220	50	1.5	2	8.5	15	1200	G3" x G3"	8	29.8
HFM/6A	220	50	2.2	3	12	19	1300	G3" x G3"	8	39.6
HFM/7B	220	50	3	4	14	22	1300	G3" x G3"	8	41



EXPLODED VIEW DRAWING - SPARE PARTS

No.	Description.	No.	Description
1	Pump Body	15	O ring
2	Motor Front cover	16	Flit plug screw
3	Terminal block	17	Terminal cover
4	Fan	18	Capacitor
5	Motor end cover	19	Washer
6	Motor body	20	O ring
7	Impeller	21	Fairlead
8	Mechanical seal	22	Fan cover
9	Motor rotor		
10	Ball bearing		
11	Spring washer		
12	Locking ring		
13	Washer		
14	Washer		

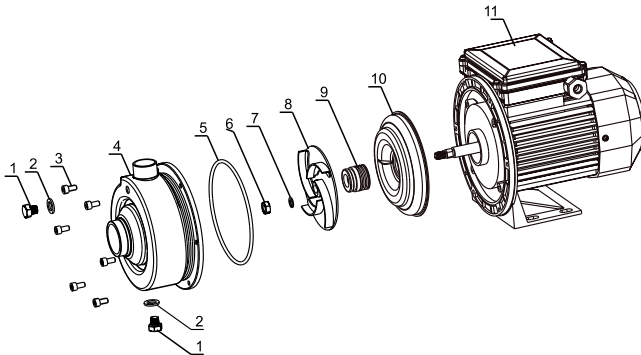
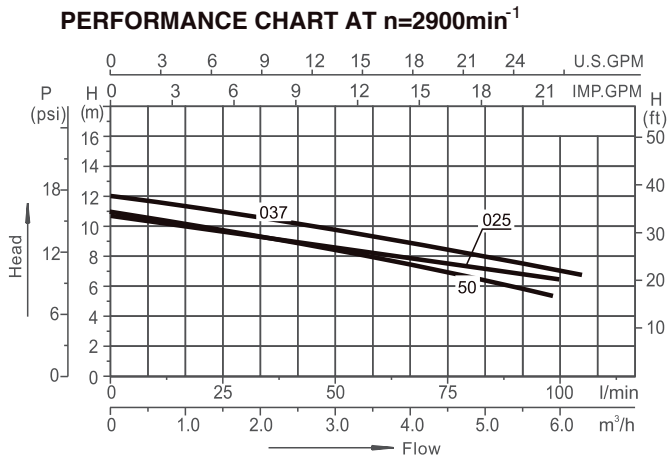
available also in 60HZ

CENTRIFUGAL PUMP - DWK

Centrifugal Pumps are suitable for both domestic and industrial applications to convey clean liquids and non-aggressive chemical fluids. These pumps are characterized by low head and high capacity.

Technical parameter

Model	Voltage	Frequency	Power P2		Current	Rated head	Rated flow	DNA	DNM	G.W
	V	Hz	kW	HP	amp	m	m ³ /h	inch	inch	kg
DWK025(T)	220	50	0.25	0.35	2.0	9	2.4	G 1 1/4	G 1	6.3
DWK037(T)	220	50	0.37	0.5	2.4	9	3.6	G 1 1/4	G 1	6.5
DWK50(T)	220	50	0.37	0.5	2.4	6.5	4.8	G 1 1/4	G 1	6.5



EXPLODED VIEW DRAWING - SPARE PARTS

No.	Description.	No.	Description
1	Plug	7	Spring washer
2	Washer	8	Impeller
3	Inside hexagonal bolt	9	Mechanical seal
4	Pump housing component	10	Pump Cover
5	O-Ring	11	Motor
6	Hexagonal Nut		

available also in 60HZ

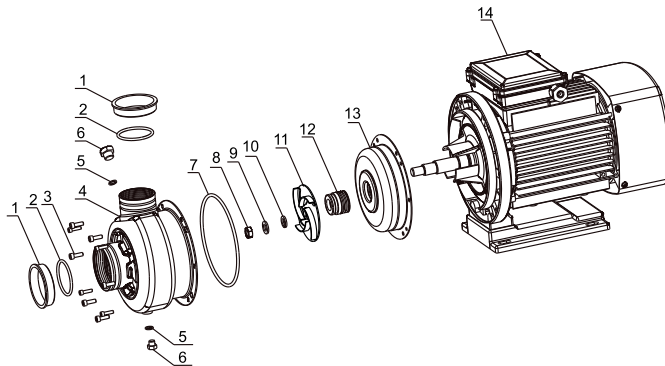
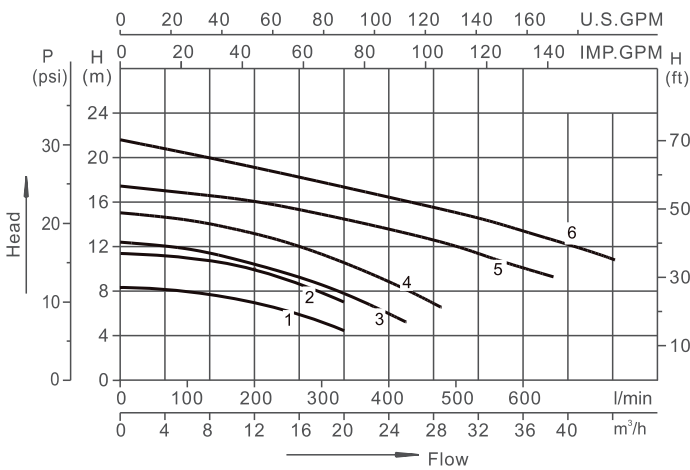
CENTRIFUGAL PUMP - DWK

Centrifugal Pumps are suitable for both domestic and industrial applications to convey clean liquids and non-aggressive chemical fluids. These pumps are characterized by low head and high capacity.

Technical parameter

Model	Voltage	Frequency	Power P2		Current	Rated head	Rated flow	DNA	DNM	G.W	Curves
	V	Hz	kW	HP	amp	m	m ³ /h	inch	inch	kg	
DWK100A(T)	220	50	0.55	0.75	3.8	7	12	G1 1/2	G1 1/2	8.8	1
DWK100(T)	220	50	0.75	1	5.2	7	12	G1 1/2	G1 1/2	9.8	1
DWK120A(T)	220	50	0.75	1	5.2	10	12	G1 1/2	G1 1/2	9.8	2
DWK120(T)	220	50	1	1.4	6.2	10	12	G1 1/2	G1 1/2	10.7	2
DWK150(T)	220	50	1.1	1.5	7	7.8	18	G2	G2	15.5	3
DWK200(T)	220	50	1.5	2	9.2	10.5	18	G2	G2	17.5	4
DWK300(T)	220	50	2.2	3	14	11	30	G2 1/2	G2	21.5	5
DWK400(T)	220	50	3	3.3		15	30	G2 1/2	G2	23.1	6

PERFORMANCE CHART AT $n=2900\text{min}^{-1}$



EXPLODED VIEW DRAWING - SPARE PARTS

No.	Description.	No.	Description
1	Dust cap	8	Hexagonal Nut
2	O-Ring	9	Washer
3	Inside hexagonal bolt	10	Spring washer
4	Pump housing component	11	Impeller
5	O-Ring	12	Mechanical seal
6	Plug	13	Pump Cover
7	O-Ring	14	Motor

available also in 60HZ

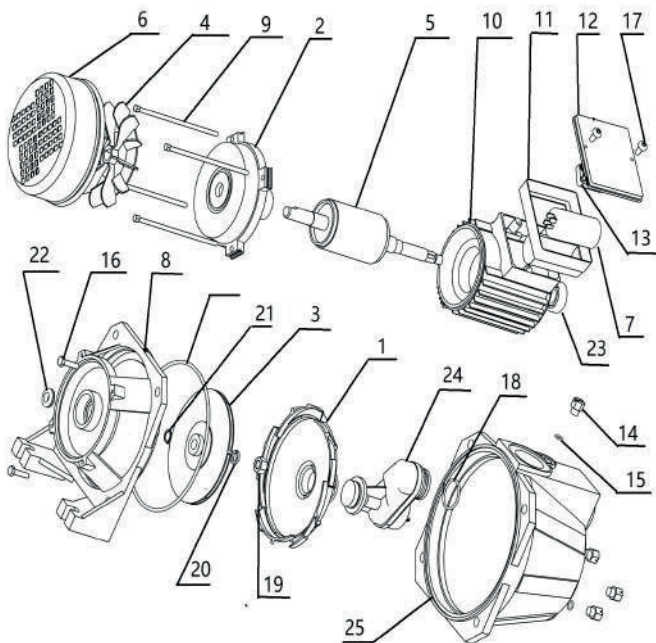
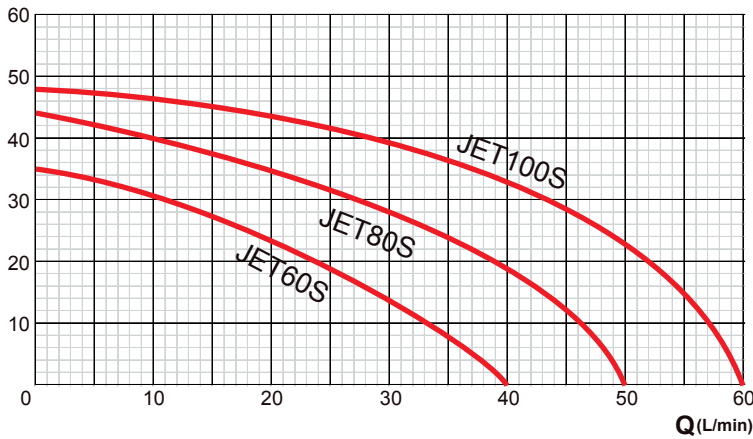
SELF-PRIMING PUMP - JET

Self-priming Pumps are equipped with a Venturi system. They are suitable to convey clean water and non-aggressive chemical fluids, even with liquid mixed with gas, from well in continuous duty; they are also indicated to increase water pressure in centralized water systems, for small irrigation systems, for watering gardens, for washing systems with water jets, for fountains, etc. It is normally advisable to install a foot valve on the suction end.

Technical parameter

Model	Voltage	Frequency	Power		Current	H.Max	Q.Max	Size	S.Head	G.W
	V	Hz	kW	HP	amp	m	L/min	inch	m	kg
JET60S	220	50	0.37	0.5	2.9	35	40	G1" x G1"	9	10
JET80S	220	50	0.55	0.75	3.5	44	50	G1" x G1"	9	11
JET100S	220	50	0.75	1	5.5	48	60	G1" x G1"	9	12

H(m) PERFORMANCE CHART AT n=2850min⁻¹



EXPLODED VIEW DRAWING - SPARE PARTS

No.	Description.	No.	Description.
1	Fluidic device	18	O ring
2	Motor end cover	19	Nut
3	Impeller	20	Spring washer
4	Fan	21	Locking ring
5	Motor rotor	22	Washer
6	Fan cover	23	Ball bearing
7	Capacitor	24	Venturi
8	Motor front cover	25	Pump body
9	Screw		
10	Motor body		
11	Terminal box		
12	Terminal cover		
13	Terminal block		
14	Flit plug screw		
15	O ring		
16	Screw		
17	Screw		

available also in 60HZ

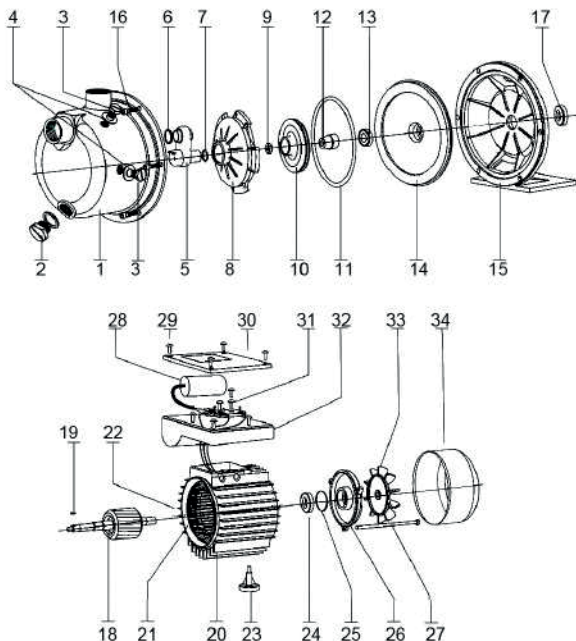
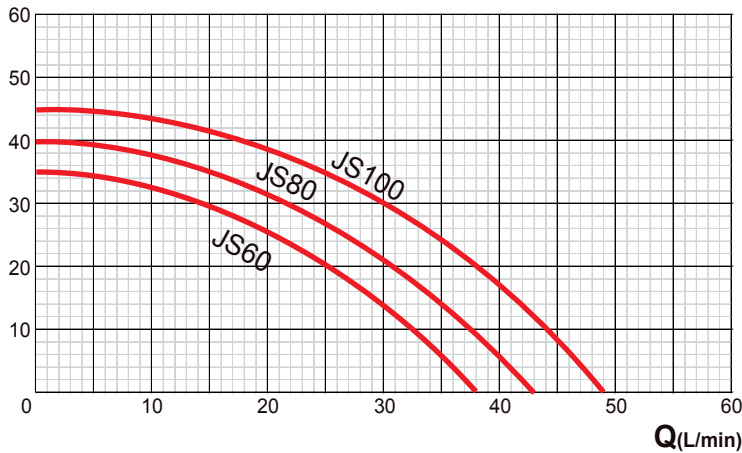
SELF-PRIMING PUMP - JS

Self-priming Pumps are equipped with a Venturi system. They are suitable to convey clean water and non-aggressive chemical fluids, even with liquid mixed with gas, from well in continuous duty; they are also indicated to increase water pressure in centralized water systems, for small irrigation systems, for watering gardens, for washing systems with water jets, for fountains, etc. It is normally advisable to install a foot valve on the suction end.

Technical parameter

Model	Voltage	Frequency	Power		Current	H.Max	Q.Max	Size	S.Head	G.W
	V	Hz	kW	HP	amp	m	L/min	inch	m	kg
JS60	220	50	0.37	0.5	2.9	35	38	G1" x G1"	9	6.8
JS80	220	50	0.55	0.75	3.5	40	43	G1" x G1"	9	7.2
JS100	220	50	0.75	1	5.5	45	49	G1" x G1"	9	7.6

H(m) PERFORMANCE CHART AT n=2850min⁻¹



EXPLODED VIEW DRAWING - SPARE PARTS

No.	Description.	No.	Description.
1	Pump Body	18	Motor Rotor
2	Coper Screw	19	Shaft Key
3	Flit Plug Screw	20	Motor Body
4	Seal	21	Stator
5	Fluidic Device	22	Stator Coil
6	Jet Seal	23	Motor Foot
7	Jet Seal	24	Ball Bearing
8	Propelling Sheave	25	Spring Washer
9	Locking Nut	26	Motor End Cover
10	Impeller	27	Bolt
11	O Ring	28	Capacitor
12	Mechanical Seal	29	Terminal Box Screw
13	Mechanical Seal	30	Terminal Cover
14	Pump Cover Board	31	Screw
15	Motor Front Cover	32	Terminal Box
16	Screw	33	Fan
17	Ball Bearing	34	Fan cover

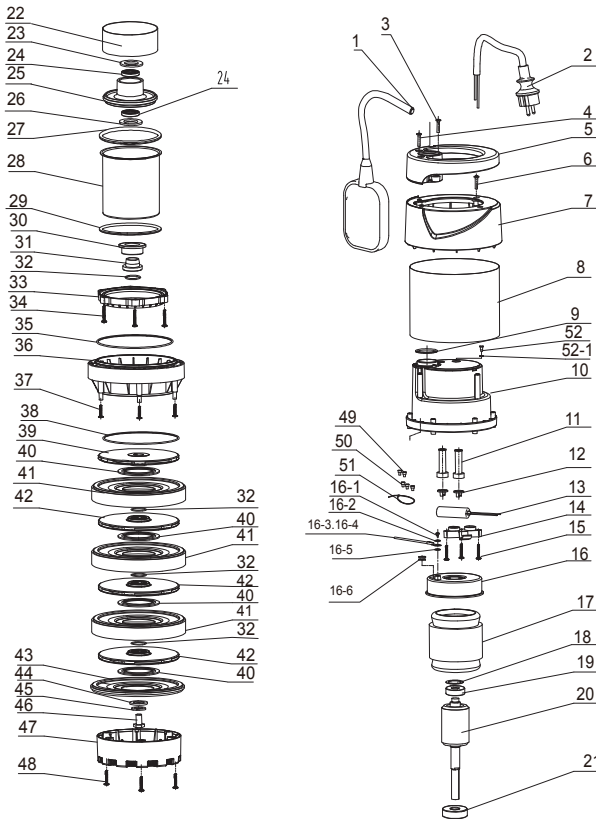
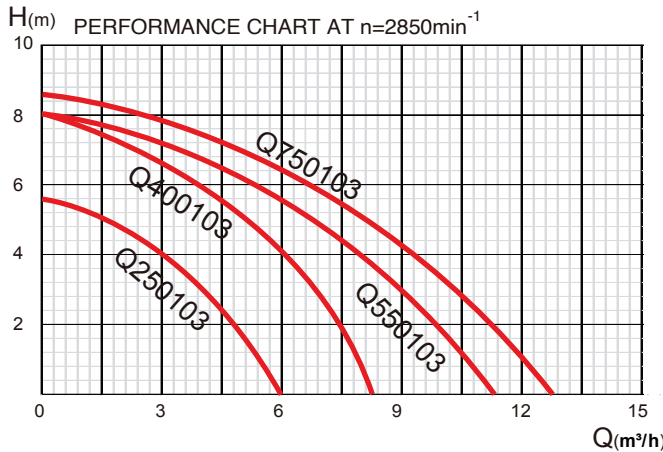
available also in 60HZ

SUBMERSIBLE PUMP - Q

Submersible Pumps with floater switch and top water discharge for clean water. They are available with plastic or stainless steel main pump body.

Technical parameter

Model	Voltage	Frequency	Power		Current	H.Max	Q.Max	Size	S.Head	G.W
	V	Hz	kW	HP	amp	m	m ³ /h	inch	m	kg
Q250103	230	50	0.25	0.33	1.2	5.5	6	G1" - G1-1/4"	7	4.4
Q400103	230	50	0.4	0.5	1.7	8	8	G1" - G1-1/4"	7	4.6
Q550103	230	50	0.55	0.8	2.3	8	11	G1" - G1-1/4"	7	5.6
Q750103	230	50	0.75	1.0	2.6	8.5	12.5	G1" - G1-1/4"	7	5.8



EXPLODED VIEW DRAWING - SPARE PARTS

NO.	Description	NO.	Description
1	Floater Switch	25	Lower Bearing Block
2	Cable	26	Gasket
3	Tapping Screw	27	O Ring
4	Tapping Screw	28	Front Cover
5	Handle	29	O Ring
6	Tapping Screw	30	Mechanical Sealing
7	End Cap	31	Shaft Sleeve
8	SSteel Housing	32	O Ring
9	O Ring	33	End Ring
10	Rear Pump Shell	34	Tapping Screw
11	Cable Sheath	35	O Ring
11-1	Cable Sheath	36	Main Pump Shell
12	Cable Lock Block	37	Tapping Screw
13	Capacitor 35 μ F	38	O Ring
14	Cable Lock Block	39	Impeller
15	Sp.Tapping Screw	40	Plastic Mat
16	Alu rear cover	41	Guide Disk
16-1	Screw	42	Impeller
16-2	Elastic Gasket	43	Guide Disk Cover
16-3	Yellow Green Line	44	Flat Gasket
16-4	Blade Terminal	45	Elastic Gasket
16-5	Gasket	46	Hexagon Bolt
16-6	Lead Sheath	47	Base
17	Stator	48	Tapping Screw
18	Corrugated Gasket	49	Nylon close-end wiri
19	Bearing	50	Nylon close-end wiri
20	Rotor	51	Ribbon
21	Bearing	52	Tapping Screw
22	Spacer	52-1	O Ring
23	Adjustable Gasket	53	White Grease
24	Skeleton Sealing	54	Dust Cap

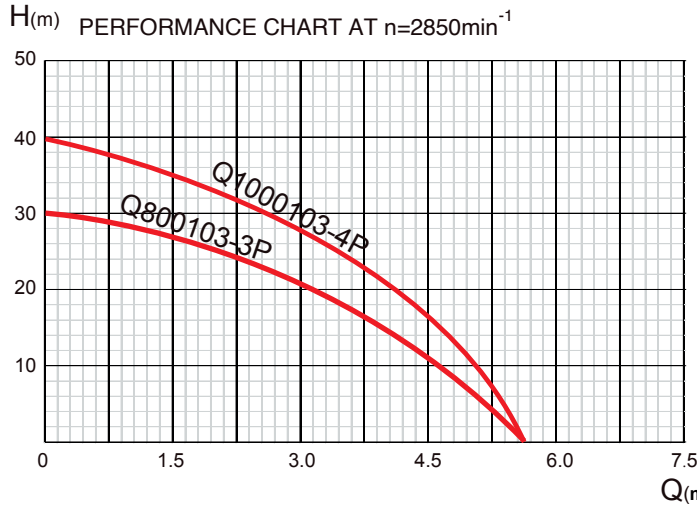
available also in 60HZ

SUBMERSIBLE PUMP

Submersible Pumps with multi-stage impeller and floater switch for clean water 800W version with 3 impellers can reach max pump head of 30m. 1000W version with 4 impellers can reach max pump head of 40m.

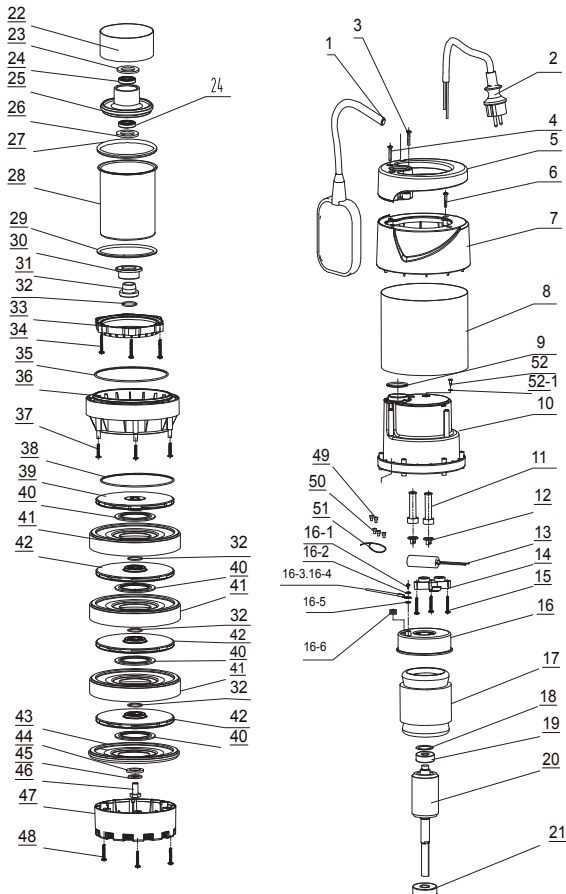
Technical parameter

Model	Voltage	Frequency	Power		Current	H.Max	Q.Max	Size	S.Head	G.W
	V	Hz	kW	HP	amp	m	m³/h	inch	m	kg
Q800103-3P	230	50	0.8	1.1	3.8	30	5.5	G1"	7	8.3
Q1000103-4P	230	50	1.0	1.3	5.2	40	5.5	G1"	7	9.0



Q(m³/h)

EXPLODED VIEW DRAWING - SPARE PARTS



NO.	Description	NO.	Description
1	Floater Switch	25	Lower Bearing Block
2	Cable	26	Gasket
3	Tapping Screw	27	O Ring
4	Tapping Screw	28	Front Cover
5	Handle	29	O Ring
6	Tapping Screw	30	Mechanical Sealing
7	End Cap	31	Shaft Sleeve
8	Steel Housing	32	O Ring
9	O Ring	33	End Ring
10	Rear Pump Shell	34	Tapping Screw
11	Cable Sheath	35	O Ring
11-1	Cable Sheath	36	Main Pump Shell
12	Cable Lock Block	37	Tapping Screw
13	Capacitor 35µF	38	O Ring
14	Cable Lock Block	39	Impeller
15	Sp.Tapping Screw	40	Plastic Mat
16	Alu rear cover	41	Guide Disk
16-1	Screw	42	Impeller
16-2	Elastic Gasket	43	Guide Disk Cover
16-3	Yellow Green Line	44	Flat Gasket
16-4	Blade Terminal	45	Elastic Gasket
16-5	Gasket	46	Hexagon Bolt
16-6	Lead Sheath	47	Base
17	Stator	48	Tapping Screw
18	Corrugated Gasket	49	Nylon close-end wiri
19	Bearing	50	Nylon close-end wiri
20	Rotor	51	Ribbon
21	Bearing	52	Tapping Screw
22	Spacer	52-1	O Ring
23	Adjustable Gasket	53	White Grease
24	Skeleton Sealing	54	Dust Cap

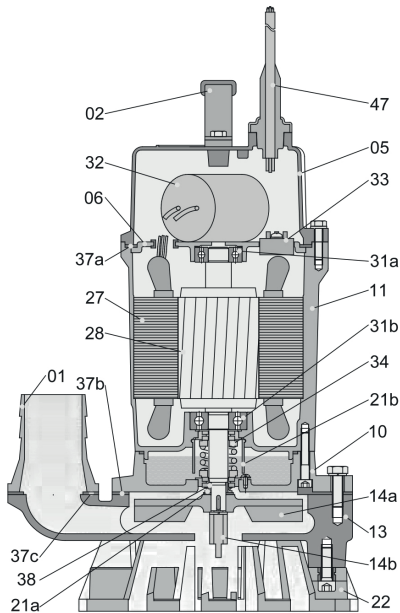
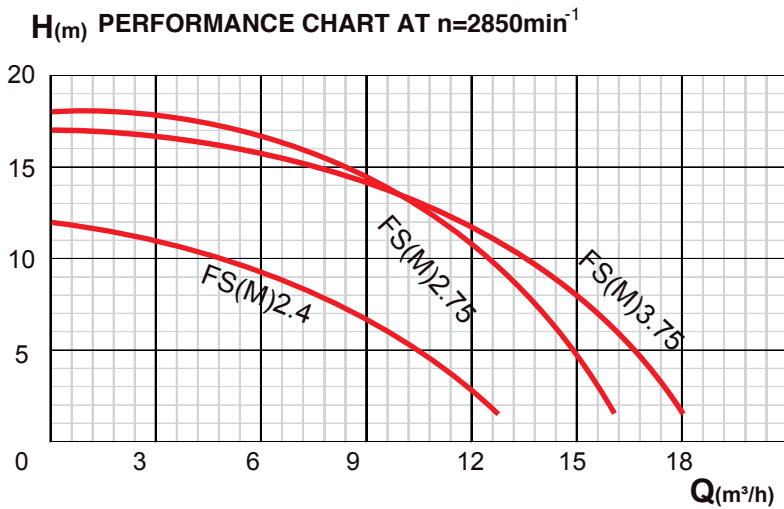
available also in 60HZ

SUBMERSIBLE DEWATERING PUMP - FS

Submersible dewatering pumps are equipped with a Semi Vortex impeller design ed to minimize the clogging situation. This ensures maximum durability and helps to maintain pump performance. Built-in shaft mounted agitator prevents the "air lock" and reduces the clogging situation. Application: civil engineering, building sites, basements or utility pits. Liquids: rainwater, mud water and highly corrosive fluids.

Technical parameter

Model	Voltage	Frequency	Power		Current	H. Max	Q. Max	Size	G.W
	V	Hz	Kw	HP	Amp	m	m ³ /h	Inch	Kg
FS(M)2.4(F)	220	50	0.4	0.55	3	12	12.6	G 2"	14.5
FS(M)2.75(F)	220	50	0.75	1	5	18	16.0	G 2"	17.5
FS(M)3.75(F)	220	50	0.75	1	5	17	18.0	G 3"	19



EXPLODED VIEW DRAWING - SPARE PARTS

No.	Description	No.	Description
1	Hose coupling	27	Stator
2	Handle	28	Rotor
05	Upper cover	31a	Bearing
06	Up-bearing house	31b	Bearing
10	Seal house	32	Capacitor
11	Motor body	33	Motor protector
13	Pump body	34	Mechanical seal
14a	Impeller	37a	Gasket
14b	Agitator	37b	Gasket
21a	Oil riser	37c	Gasket
22	Seat assembly	38	Shaft sleeve
		47	Cable

available also in 60HZ

SUBMERSIBLE PUMP - KSM - KS

Submersible pumps Compact design, high performance and exceptional durability for handling abrasive liquid, widely used in general construction and civil engineering.

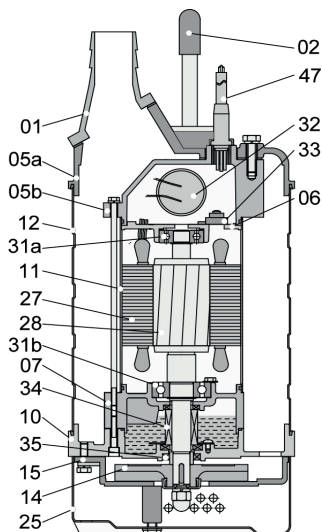
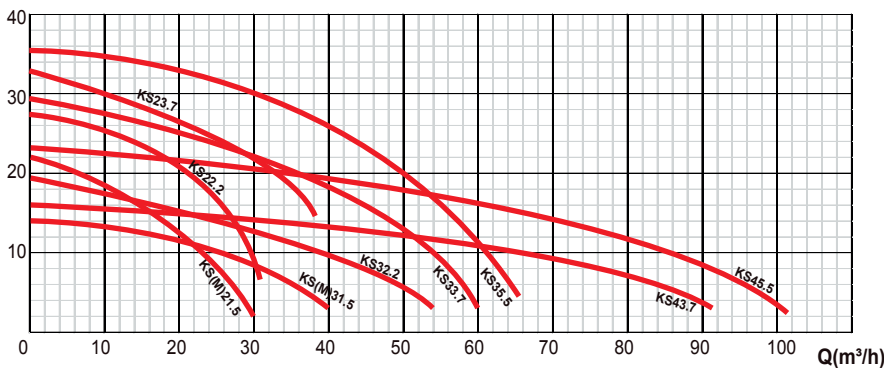
The body of motor and pump is made from cast iron or stainless steel for long-lasting durability.

Greatly increased maximum submersion depth due to mechanical seal resistant to high pressure (0.5 Mpa).

Technical parameter

Model	Voltage	Frequency	Power		Current	H.Max	Q.Max	Size	G.W
	V	Hz	kW	HP	Amp	m	m ³ /h	Inch	Kg
KSM21.5(F)	220	50	1.5	2	10	21	30	G 2"	41
KSM31.5(F)	220	50	1.5	2	10	14	42	G 3"	41
KS21.5	400	50	1.5	2	3.5	21	30	G 2"	41
KS21.5F	400	50	1.5	2	3.5	21	30	G 2"	43
KS31.5	400	50	1.5	2	3.5	14	42	G 3"	41
KS31.5F	400	50	1.5	2	3.5	14	42	G 3"	43
KS22.2	400	50	2.2	3	5	25	32	G 2"	44
KS22.2F	400	50	2.2	3	5	25	32	G 2"	46
KS32.2	400	50	2.2	3	5	18.5	55	G 3"	44
KS32.2F	400	50	2.2	3	5	18.5	55	G 3"	46
KS23.7	400	50	3.7	5	7.7	32	36	G 2"	64
KS23.7F	400	50	3.7	5	7.7	32	36	G 2"	66
KS33.7	400	50	3.7	5	7.7	29	60	G 3"	64
KS33.7F	400	50	3.7	5	7.7	29	60	G 3"	66
KS43.7	400	50	3.7	5	7.7	18	95	G 4"	65
KS43.7F	400	50	3.7	5	7.7	18	95	G 4"	67
KS35.5	400	50	5.5	7.5	11.4	35	72	G 3"	72
KS35.5F	400	50	5.5	7.5	11.4	35	72	G 3"	74
KS45.5	400	50	5.5	7.5	11.4	23	105	G 4"	73
KS45.5F	400	50	5.5	7.5	11.4	23	105	G 4"	75

H(m) PERFORMANCE CHART AT n=2850min⁻¹



EXPLODED VIEW DRAWING - SPARE PARTS

No.	Description	No.	Description
01	Hose coupling	25	Strauber
02	Handle	27	Stator
05a	Upper cover	28	Rotor
05b	Upper cover	31a	Bearing
06	Up-bearing house	31b	Bearing
07	Bearing house	32	Capacitor
10	Seal bracket	33	Motor protector
11	Motor casing	34	Mechanical seal
12	Outer casing	35	Oil seal
14	Impeller	47	Cable
15	Diffuser		

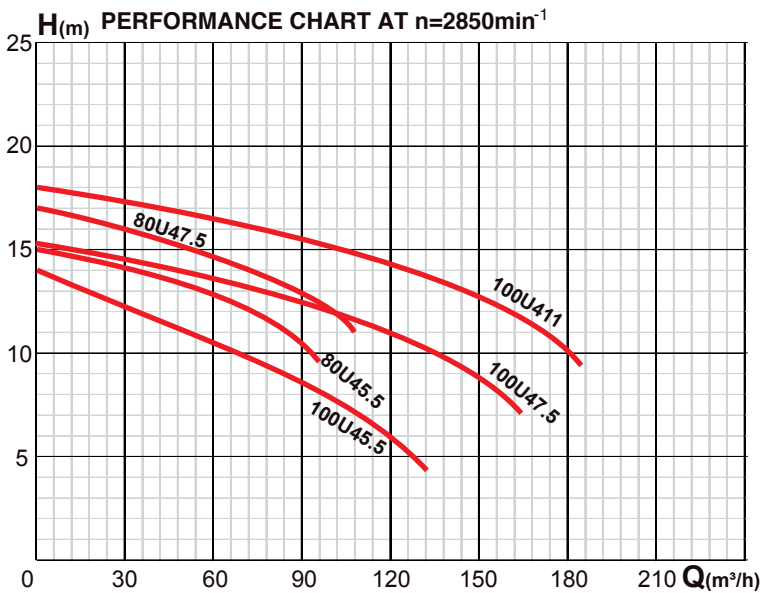
available also in 60HZ

SEWAGE PUMP - U

Sewage pumps The vortex impeller resides out of volute: therefore any solid that can enter the inlet is able to traverse the channel via vortex action. The Sic Mechanical Seal has great wear resistance. Watertight cable entry system protects the motor from water and moisture in case of cable damaged and submerged. Built-in thermal protector automatically stops pump in event of open phase, short circuit, overloading and overheating

Technical

Model	Voltage	Frequency	Power		Current	H.Max	Q.Max	Size	G.W
	V	Hz	kW	HP	Amp	m	m³/h	Inch	Kg
80U45.5	380	50	5.5	7.5	11.7	15	95	G 3"	145
100U45.5	380	50	5.5	7.5	11.7	14	135	G 4"	149
80U47.5	380	50	7.5	10	15.7	17	110	G 3"	161
100U47.5	380	50	7.5	10	15.7	15	165	G 4"	165
100U411	380	50	11	15	22	18	190	G 4"	185



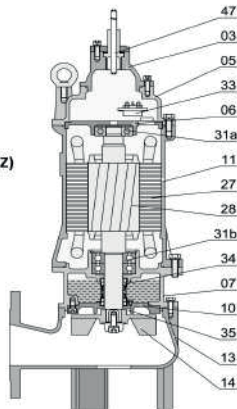
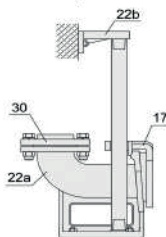
Movable Soft Pipe Installation(R)



Hard Pipe Installation(Y)



Auto-coupled Installation(Z)



EXPLODED VIEW DRAWING - SPARE PARTS

No.	Description	No.	Description
01	Hose coupling	22a	Coupling seat
01a	Hose coupling	22b	Upper guide support
03	Terminal box	27	Stator
05	Upper cover	28	Rotor
06	Up-Bearing house	30	Flange
07	Bearing house	31a	Bearing
10	Seal bracket	31b	Bearing
11	Motor body	33	Motor protector
13	Pump body	34	Mechanical seal
14	Impeller	47	Cable
17	Coupling adapter		

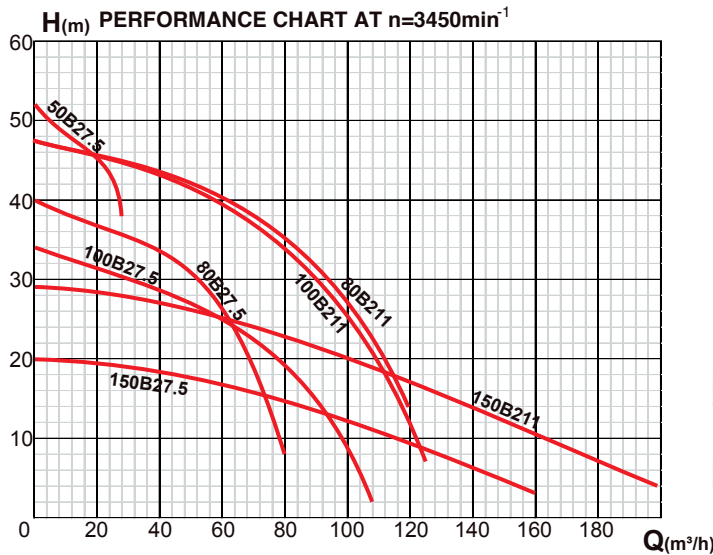
available also in 60HZ

SEWAGE PUMP - B

Sewage pumps Non-clogging double vane impeller can pump large solids. They cover a full range of head. Chrome plating of shaft ensure high corrosion resistance and wear resistance. Designed for pumping sewage, waste water, rainwater and living water containing solid grains, various fabric, sludge and solid.

Technical parameter

Model	Voltage	Frequency	Power		Current	H.Max	Q.Max	Size	G.W
	V		Hz	kW					
50B27.5	380	50	7.5	10	15.7	52	37	G 2"	129
80B27.5	380	50	7.5	10	15.7	40	80	G 3"	134
100B27.5	380	50	7.5	10	15.7	34	110	G 4"	140
150B27.5	380	50	7.5	10	15.7	20	160	G 6"	154
80B211	380	50	11	15	22	48	110	G 3"	147
100B211	380	50	11	15	22	48	125	G 4"	151
150B211	380	50	11	15	22	29	200	G 6"	165



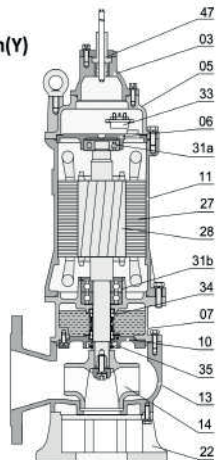
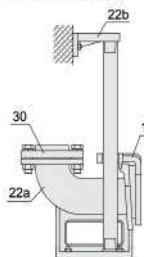
Movable Soft Pipe Installation(R)



Hard Pipe Installation(Y)



Auto-coupled Installation(Z)



EXPLODED VIEW DRAWINGS - SPARE PARTS

No.	Description	No.	Description
01	Hose coupling	22a	Coupling seat
01a	Hose coupling	22b	Upper guide support
03	Terminal box	27	Stator
05	Upper cover	28	Rotor
06	Up-Bearing house	30	Flange
07	Bearing house	31a	Bearing
10	Seal bracket	31b	Bearing
11	Motor body	33	Motor protector
13	Pump body	34a	Mechanical seal
14	Impeller	34b	Mechanical seal
17	Coupling adapter	47	Cable
22	Seat assembly		

available also in 60HZ

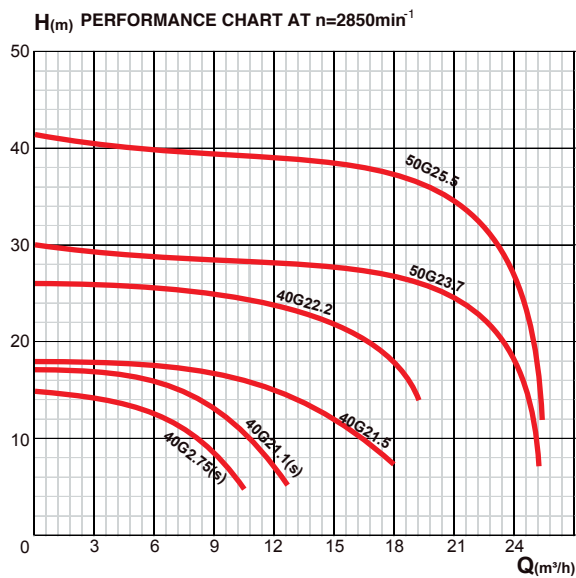
SUBMERSIBLE GRINDER PUMP - G

Submersible grinder pumps utilize a grinding mechanism in the suction port to crush solid residuals into fine particles before discharging the waste.

Solid residuals are finely grinded by the built-in grinder mechanism and discharged by a vortex impeller.

Technical parameter

Model	Voltage	Frequency	Power		Current	H.Max	Q.Max	Size	G.W
	V	Hz	kW	HP	Amp	m	m ³ /h	Inch	Kg
40G2.75	380	50	0.75	1	2	15	12	G 1-1/2"	24.5
40G2.75S	220	50	0.75	1	5.2	15	12	G 1-1/2"	25.5
40G21.1	380	50	1.1	1.5	2.8	17	13	G 1-1/2"	26
40G21.1S	220	50	1.1	1.5	7.2	17	13	G 1-1/2"	27
40G21.5	380	50	1.5	2	3.2	18	18	G 1-1/2"	39
40G22.2	380	50	2.2	3	5	26	20	G 1-1/2"	41.5
50G23.7	380	50	3.7	5	8.5	30	25	G 2"	58
50G25.5	380	50	5.5	7.5	11.7	42	25	G 2"	71



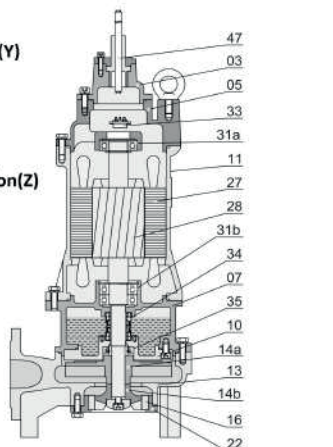
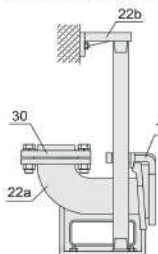
Movable Soft Pipe Installation(R)



Hard Pipe Installation(Y)



Auto-coupled Installation(Z)



EXPLODED VIEW DRAWING - SPARE PARTS

No.	Description	No.	Description
01	Hose coupling	22	Seat assembly
01a	Hose coupling	22a	Coupling seat
03	Terminal box	22b	Upper guide support
05	Upper cover	27	Stator
07	Bearing house	28	Rotor
10	Seal bracket	30	Flange
11	Motor body	31a	Bearing
13	Pump body	31b	Bearing
14a	Impeller	33	Motor protector
14b	Rotational blade	34	Mechanical seal
16	Stationary blade	35	Oil seal
17	Coupling adapter	47	Cable

available also in 60HZ

DEEP WELL PUMP - 4SD - 6SP

Deep well pumps are used for pumpin water from wells or reservoirs, for domestic use ,for home and industrial applications , for garden use and irrigation

Technical parameter

Model		Frequency	Power P2		Q	PERFORMANCE AT n≈2850 rpm									
1~	3~		kW	HP		m³/h	0	0.6	1.2	1.8	2.4	3	3.6	4.2	4.8
220-240V	380-415V						l/min	0	10	20	30	40	50	60	20
4SDM3/10	4SD3/10	50Hz	0.55	0.75	H(m)	72	70	68	64	58	50	40	29	15	
4SDM3/13	4SD3/13	50Hz	0.75	1		93	91	88	83	76	66	53	38	19	
4SDM3/15	4SD3/15	50Hz	0.92	1.25		108	105	102	96	88	76	61	43	22	
4SDM3/18	4SD3/18	50Hz	1.1	1.5		129	126	122	115	105	91	73	52	27	
4SDM3/20	4SD3/20	50Hz	1.3	1.75		144	140	135	128	117	101	81	58	30	
4SDM3/22	4SD3/22	50Hz	1.5	2		158	154	149	141	128	111	89	64	33	
4SDM3/26	4SD3/26	50Hz	1.8	2.5		187	182	176	166	152	131	105	75	39	
4SDM3/30	4SD3/30	50Hz	2.2	3		215	210	203	192	175	151	121	87	45	
4SDM3/35	4SD3/35	50Hz	2.6	3.5		251	245	237	224	204	177	142	101	52	
-	4SD3/40	50Hz	3	4		287	280	271	255	234	202	162	115	60	
-	4SD3/45	50Hz	3.7	5		323	315	305	287	263	227	182	130	67	

Model		Frequency	Power P2		Q	PERFORMANCE AT n≈2850 rpm									
1~	3~		kW	HP		m³/h	0	6	12	18	24	30	36	42	
220-240V	380-415V						l/min	0	100	200	300	400	500	600	700
6SPM30-4	6SP30-4	50Hz	4	5.5	H(m)	46	44	42	40	37	32	25	16		
6SPM30-6	6SP30-6	50Hz	5.5	7.5		69	66	63	60	55	47	37	24		
-	6SP30-7	50Hz	7.5	10		80	77	74	70	64	55	43	28		
-	6SP30-8	50Hz	7.5	10		92	89	85	80	74	63	50	33		
-	6SP30-9	50Hz	9.2	12.5		103	100	95	89	83	71	56	37		
-	6SP30-10	50Hz	9.2	12.5		114	111	106	99	92	79	62	41		
-	6SP30-12	50Hz	11	15		137	133	127	119	110	95	74	49		
-	6SP30-14	50Hz	13	17.5		160	155	148	139	129	110	87	57		
-	6SP30-16	50Hz	15	20		183	177	169	159	147	126	99	65		
-	6SP30-18	50Hz	18.5	25		206	199	190	179	165	142	111	73		
-	6SP30-20	50Hz	18.5	25		229	221	211	199	184	158	124	81		



3SD



4SD



available also in 60HZ

VERTICAL MULTISTAGE PUMP - CV

Vertical multistage pumps are suitable for transferring low viscosity liquids, non-inflammable and non explosive, not containing solid particles or fibers. Water supply & drainage for high-rise buildings, filtration and transfer at waterworks, pressure boosting in main pipe. Washing and cleaning systems, boiler feeding, cooling water circulation, water treatment systems, auxiliary system, support equipment. Ultra filtration systems, reverse-osmosis systems, distillation systems, separators, swimming pools. Agricultural irrigation sprinkler irrigation drip-feed irrigation. Food & beverage industry. Fire fighting system.

Technical parameter

Model	Voltage	Frequency	Power P2	Q										
	V	Hz	Kw		m³/h	0.4	0.6	0.8	1.0	1.2	1.4	1.6	1.8	2.0
CV1-10	220	50	0.55	(m)	58	57.5	57	56	54	52	48	46	41.5	37
CV1-13	220	50	0.75		75	74.5	74	72	69	66	63	59	54	47
CV1-19	220	50	1.1		110.5	109	108	106	101	97	91	86	78	66
CV1-21	220	50	1.1	122	120.5	119.5	116	112	108	101	95	86	73	

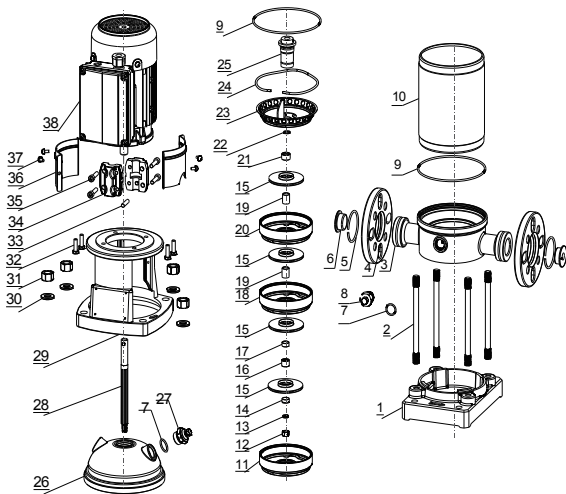
Model	Voltage	Frequency	Power P2	Q											
	V	Hz	Kw		m³/h	2.0	3.0	4.0	4.5	5.0	5.5	6.0	6.5	7.0	7.5
CV5-10	220	50	1.50	H (m)	62	59	55	53	50	47	44	41	37	34	30
CV5-15	220	50	2.20		96	93	88	84	80	75	70	64	59	52	45
CV5-20	220	50	3.00		129	122	115	109	105	99	94	86	78	70	60

Model	Voltage	Frequency	Power P2	Q							
	V	Hz	Kw		m³/h	2.0	4.0	6.0	8.0	10	12
CV10-8	220	50	3.0	H(m)	83	81	78	71	62	51	37

Model	Voltage	Frequency	Power P ₂	Rated flow										
	V	Hz	Kw		m³/h	8	10	12	14	15	16	18	20	22
CV15-7	220	50	5.5	H (m)	94	92	88	83	80	78	71	64	56	50

Model	Voltage	Frequency	Power P ₂	Rated flow										
	V	Hz	Kw		m³/h	8	10	12	14	16	18	20	24	26
CV20-7	220	50	7.5	H (m)	96	94	92	89	86	82	77	65	58	47

Model	Voltage	Frequency	Power P ₂	Rated flow									
	V	Hz	Kw		m³/h	12	16	20	24	28	30	32	36
CV32-6-2	220	50	11	H (m)	101	97	92	87	79	75	70	59	47



EXPLODED VIEW DRAWING - SPARE PARTS

No.	Description	No.	Description
1	Base	20	Middle section
2	Two-head bolt	21	Snap-ring seat
3	Pump body	22	Snap-ring
4	Flange	23	Outlet Section
5	Flange ring	24	Elastic ring
6	Dust cap	25	Mechanical Seal
7	O-Ring	26	Pump cover
8	Drain valve assembly	27	Release valve
9	O-Ring	28	Pump shaft
10	Housing	29	Motor base
11	Inlet section	30	Washer
12	Locked Nut	31	Hexagonal Nut
13	Spring washer	32	Hexagonal bolt
14	Impeller Fix Ring	33	Cylindrical pin
15	Impeller	34	Coupling
16	Bearing sleeve	35	Hexagon socket head cap screw
17	Short sleeve	36	Protective cover
18	Diffuser with bearing	37	Screw and washer
19	Long sleeve	38	O-Ring



available also in 60HZ



IMAS GROUP
REAL QUALITY MADE IN ITALY

NUOVA IMAS Srl

31020 San Zenone degli Ezzelini (TREVISO) ITALY - Street Roma, 163 - Tel. +39 0423 968402 - Fax +39 0423 567216
info@imasradiators.com - www.imasradiators.com